

## Work Instruction: Driving Text on Parts for Decals

### 1. Audience

This work instruction provides guidance to the SmartSpec/Configurator Engineering Team

### 2. Objective:

Inserting text for required decals

### 3. Revision and Approval

Rev.	Date	Nature of Changes	Approved By
N	02/03/2020	Original issue.	Parashar

### 4. Scope

This instruction is related to the inserting decal on models.

### 5. Prerequisites

- DriveWorks Training
- Solidworks

### 6. Records

- Electronic

### 7. Associated Documents

None

### 8. Evaluative Factors

None

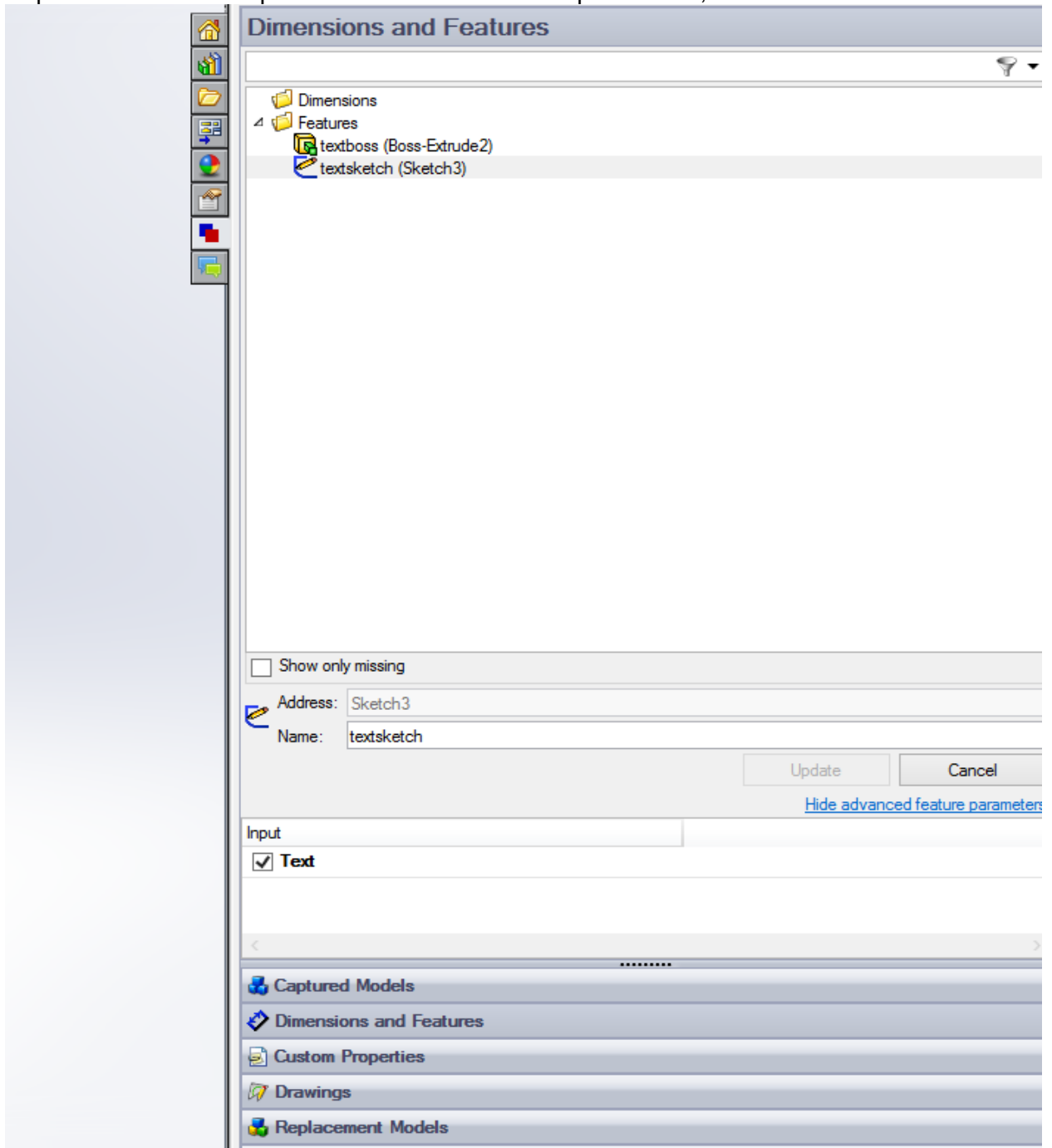
### 9. Responsibility

The Configurator Engineer is responsible for maintaining this work instruction.

### 10. Instructions

## Step 1

Capture the text on the part and in advanced feature parameters, select "text."



## Step 2

In Administrator, provide the rule shown in the screen print below.

Name	Component	Type	Value	Rule	Comment	Address	Component Path	Parameter Path
Caldwelldecal	Caldwelldecal (Pa	File Name	Model19 9999	=DWSpecification		Name	M19\Caldwelldecal	M19\Caldwelldecal\Name
Relative Path	Caldwelldecal (Pa	Relative Path	Model19 9999	=DWSpecification		Path	M19\Caldwelldecal	M19\Caldwelldecal\Path
Configuration	Caldwelldecal (Pa	Configuration					M19\Caldwelldecal	M19\Caldwelldecal
textboss	Caldwelldecal (Pa	Feature	U	= "U"		Boss-Extrude2	M19\Caldwelldecal	M19\Caldwelldecal\Boss-Extrude
textsketch	Caldwelldecal (Pa	Feature	U	= "U"		Sketch3	M19\Caldwelldecal	M19\Caldwelldecal\Sketch3
textsketch\Text	Caldwelldecal (Pa	Feature Parameter		=inputfortextReturn		Text	M19\Caldwelldecal	M19\Caldwelldecal\Sketch3\Text